

IK-542/542XD



f e a t u r e s

**Toshiba's first progressive scan
video camera with remote-head
or one piece design.**

*Capture an entire image in one
shutter event. Double vertical
resolution and eliminate blurring
from motion artifacts.*

- 1-Pulse or 2-Pulse Trigger (Start and Stop Exposure with Ext. Trigger Pulse)
- Interlaced or Non-Interlaced Output
- Field Memory: allows 1/60 sec. Full-Frame Capture and Interlaced Output at 1/30 sec. to RS-170 Standard
- 60 Frames Per Sec. Dual Output
- 1/30-1/50,000 sec. Electronic Shutter
- Adjustable Gain
- Asynchronous Continuously Variable Electronic Shutter
- 1/2 inch CCD with Universal C-Mount
- Removable IR Cut Filter
- Square Pixels
- Freeze Frame

Imaging Video Products Group

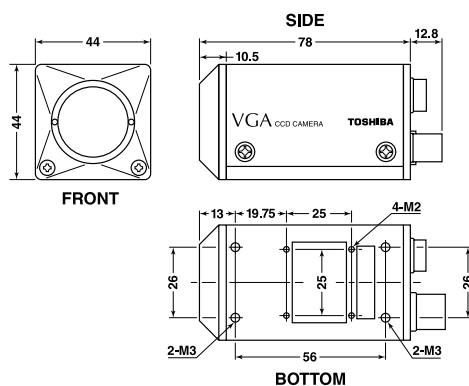
TOSHIBA

IK-542/542XD

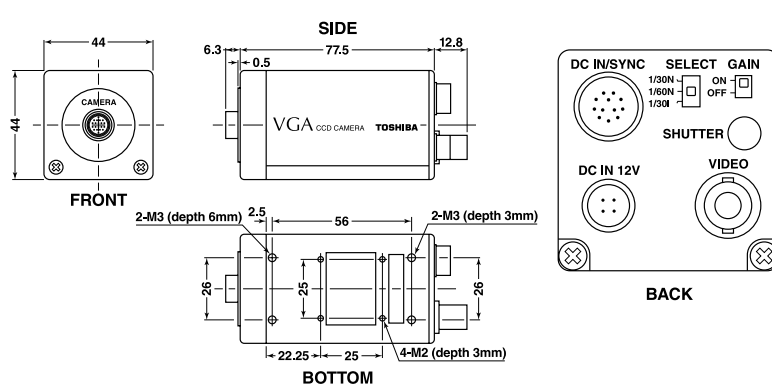
s p e c i f i c a t i o n s

	IK-542	IK-542XD
Power	DC 12 V \pm 10%	
Power consumption	Approx. 3.5 W	
Image element	1/2 inch CCD image sensor	
Pixel size	9.9 x 9.9 μ m	
Effective shooting area	Horizontal: 6.52 mm Vertical: 4.89 mm	
Effective pixel	Horizontal: 659 pixel Vertical: 494 pixel	
Scanning system	2:1 interlace / non-interlace	
Scanning frequency	Horizontal: 15.734 kHz Vertical: 59.94 Hz	
Sync. system	Internal / external (auto switching) • HD, VD mode	
Trigger function	1-pulse / 2-pulse trigger mode	
Resolution	Horizontal: 490 TV lines Vertical: 480 TV lines	
Normal illumination	400 lx (F4 3200 K)	
Minimum illumination	3 lx (F1.4, gamma 0.45)	
S/N ratio	More than 56 dB (gamma 1.0 weighting filter ON)	
Video output	1.0V (p-p) 75 Ω unbalanced, 1/60 N (1/60s non-interlace) 1/30 N (1/30s non-interlace), 1/30 I (1/30s interlace) (RS-170)	
Electronic shutter	1/30s, 1/60s, 1/100s, 1/150s, 1/250s, 1/500s, 1/1000s, 1/1500s, 1/2000s, 1/3000s, 1/4000s, 1/6000s, 1/8000s, 1/10000s, 1/30000s, 1/50000s	
Gain switch	Off/On (9dB)	Off/On (0 ~ 9dB adjustable)
Lens mount	C-mount	M19 (p-0.5, flange back 9 mm in air) (can be loaded to C-mount adapter)
Weight	Approx. 160 g	Head: approx. 25 g (C-mount adapter and cable not included) CCU: approx. 160 g
Dimensions	44 mm (W) x 44 mm (H) x 78 mm (D)	Head: 26 mm (W) x 22 mm (H) x 30 mm (D) CCU: 44 mm (W) x 44 mm (H) x 77.5 mm (D)
Camera cable	—	0.5 m direct extension from head
Optional Accessories	—	Ext. cable (EXC-7X01:1.5m), (EXC-7X03:3m)
Ambient operation Temperature/Humidity	-10 °C ~ 50 °C / less than 90%	
Anti-vibration & shock	70 m/ss (10 ~ 200 Hz); 700 m/ss	
Applicable regulations	FCC class A, CE	

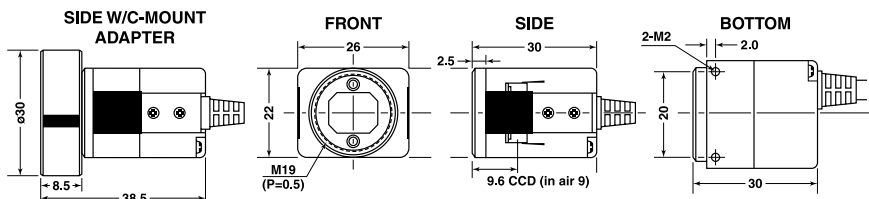
IK-542



IK-542XD



Remote
Camera Head



TOSHIBA

Toshiba America Information Systems, Inc.

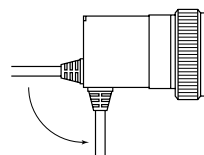
Imaging Systems Division

Imaging Video Products Group

9740 Irvine Boulevard • Irvine, CA 92618-1697

(949) 461-4986

<http://www.toshiba.com/taisid/indmed>



Selectable horizontal or vertical cable exit