

MICRO CAMERA HEAD

IK-M50H

CAUTION

This product is class A of EN55022. In residential area, it may cause radio interference. In this case, user takes measures to meet the situation.

INFORMATION

This equipment has been tested and found to comply with the limits for a Class A digital device, pursuant to Part 15 of the FCC Rules. These limits are designed to provide reasonable protection against harmful interference when the equipment is operated in a commercial environment. This equipment generates, uses, and can radiate radio frequency energy and, if not installed and used in accordance with the instruction manual, may cause harmful interference to radio communications. Operation of this equipment in a residential area is likely to cause harmful interference in which case the user will be required to correct the interference at his own expense.

USER-INSTALLER CAUTION: Your authority to operate this FCC verified equipment could be voided if you make changes or modifications not expressly approved by the party responsible for compliance to Part 15 of the FCC rules.

This Class A digital apparatus complies with Canadian ICES-003.

Cet appareil numérique de la classe A est conforme à la norme NMB-003 du Canada.

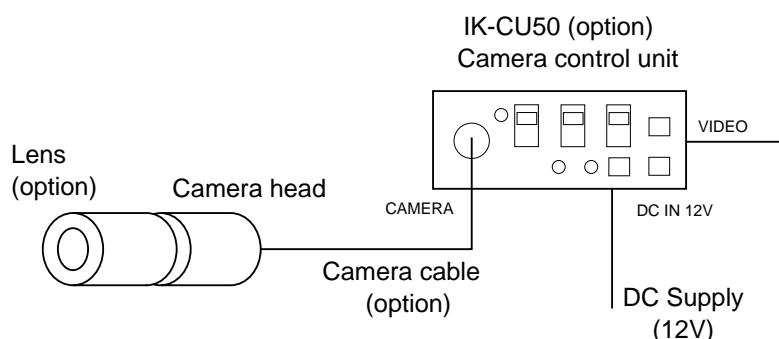
CAUTIONS ON USE

- Please use this apparatus by connecting only with camera control unit IK-CU50.
- Read the "CAUTIONS ON USE AND INSTALLATION" in the instruction manual of IK-CU50, and comply with request.

COMPONENTS

- (1) Camera head (without lens) 1
- (2) Accessories
 - (a) Camera holder 1
 - (b) Instruction manual 1

CONNECTION



- When connecting or disconnecting the camera cables (for the camera head and camera control unit), always turn off the power switch of the camera control unit. If not, the camera head may be damaged.

SPECIFICATIONS

Image sensor	1/2 inch IT-CCD
Effective pixels	Horizontal: 752 pixels, Vertical: 582 pixels
Effective image area	Horizontal: 6.47 mm, Vertical: 4.83 mm
Resolution	Horizontal: More than 470 lines, Vertical: More than 420 lines
Standard intensity of illumination for objects	60 lx (F1.6, 3000K)
Minimum intensity of illumination for objects	5 lx (F1.6, 3000K)
Weight	0.6 oz (18g)

- Design and specifications are subject to change without notice.

OPTIONAL PARTS

For further details, call the dealers.

Camera control unit

Type name
IK-CU50

Lens

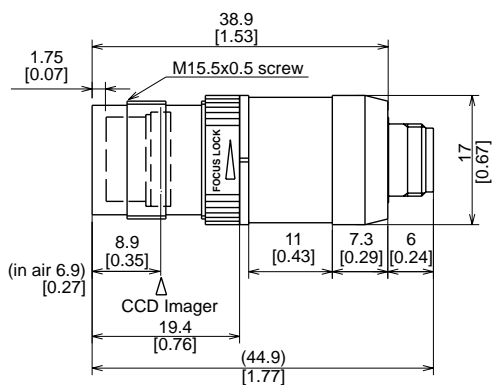
Type name	Focal length mm	F stop
JK-L03M	3.0	1.8
JK-L04M2	4.5	2.0
JK-L75M	7.5	1.6
JK-L15M2	15.0	2.0
JK-L24M2	24.0	3.1

Camera cable

Type name	Nominal length m	Diameter mm
EXC-4302	2	5.0
EXC-4303	3	5.0
EXC-4305	5	5.0
EXC-4312	12	5.0
EXC-4320	20	5.0
EXC-4330	30	5.0

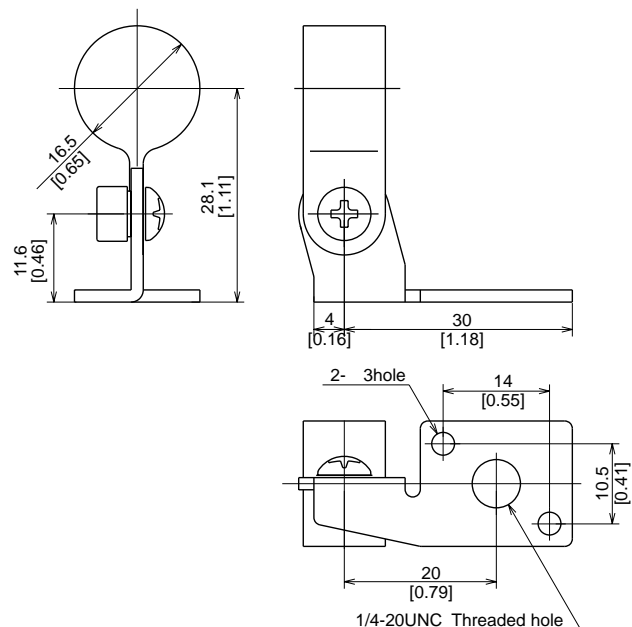
EXTERIOR DIMENSIONS

Camera Head



Camera Holder

Unit : mm [inch]
 ø : diameter



PRINTED IN JAPAN
 70971732