

Entaniya Fisheye



The Entaniya HAL200 range of 200° high resolution fisheye VR lenses enables the capture of unique wide-angle images well beyond a normal field of view. Despite the 200° angle of view the lens quality reveals few aberrations or fringing making it one of the best quality fisheye lenses in the world.

The lens consists of interchangeable front and rear lens groups along with a selection of camera mounts allowing flexible use on a selection of large format cameras from RED, Blackmagic, Sony, Panasonic, etc.

The lens has a fixed aperture but accessories include several interchangeable aperture rings and Neutral density filters.

When filming with full size sensor cameras it is recommended that APS-C sensors be used.

Use HAL 250 lenses for:

- 360VR video
- 360VR stills photography
- 3D 180° Stereo video *

* Use cameras such as the Blackmagic micro studio 4K camera

Please contact SeeSense for further details of the full range of lenses we offer:

www.seesense.eu nigel@seesense.eu

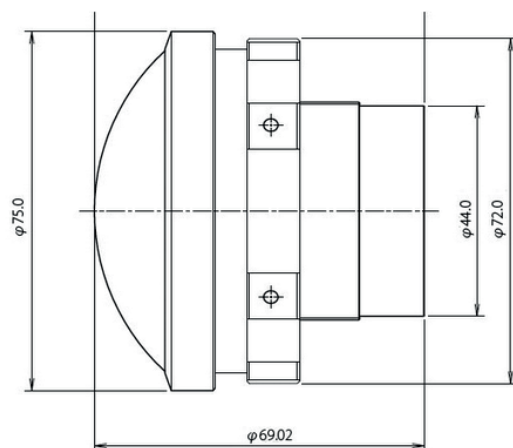
Features:

- 200° angle of View
- Focal length options 3.6 or 5.2mm*
- 4K Resolution
- Selection of camera mounts available
- F4.0 aperture or optional F2.8, F5.6 or F8.0
- Used for video or still photography
- 3D 180° stereo imaging
- Suitable for one-shot VR and multiple cameras
- Selection of camera rigs available
- Japanese lens technology & quality
- Weight 860 grammes
- Supplied with lens tripod mount

* 5.2mm Available Spring 2018



3.6mm lens shown



Rev: 1.027.1217 E.&O.E.

Specification:

Focal Length	3.6mm	5.0mm **
Field of View	H:200° V:200°	H:250° V:140°
Image Size	190° = Ø11.0mm 200° = Ø12.0mm	180° = Ø15.2mm 200° = Ø16.6mm
Aperture	F4.0*	F5.6
Adjustment	Manual focus, fixed iris	
Lens Elements	17 Elements in 11 groups, 4 Extra Low Dispersion Lenses	
Resolution	Suitable for 4K	
Weight (g)	860g (E-mount)	
Dimensions	74mm (Dia) x 69mm (Length to flange)	
Operating Temperature	-10 ~ +50°C (0 ~ +35°C recommended)	

Mount Options:

			Weight
Canon EF-mount		YES	405g
E-mount Version 1	YES		508g
E-mount Version 2		YES	508g
MFT-mount	YES		296g
C-mount	YES		318g

* Interchangeable iris rings included F2.8, F4.0, F5.6 & F8.0
ND Filters included 0.6, 1.2

** COMING SOON

Camera Compatibility:

EF-Mount Adapter

RED Weapon Helium 8K
BlackMagic URSA mini

E-Mount Adapter

Sony A7RII
Sony A7S / A7SII
Sony FS5
Sony A6500

MFT-Mount Adapter

Panasonic GH4 & GH5
JVC GY-LS300CH
Olympus OM-D
Blackmagic Micro Studio Camera 4K

C-mount Adapter

FASTCAM Mini

N.B. THIS IS JUST A SELECTION OF COMPATIBLE CAMERAS

Accessories:

One camera vertical rig

RIG-OC-13 Ideal for Panasonic GH4 or GH5

Side-by-Side Rigs

2 x Panasonic GH5 5600 x 2800 with 3.6mm lens
2 x Sony UMC-S3COA 4000 x 2000 with 4.3mm lens
2 x Sony A6500 4000 x 2000 with 3.0mm lens
4800 x 2400 with 3.6mm lens
2 x Sony A7 4000 x 2000 with 3.6mm lens

Back-to-Back Rigs

2 x Sony A6500
- 4K Anamorphic 4:3 2800 x 1400 with 2.3mm lens
- 6K Anamorphic 4:3 3900 x 1950 with 3.0mm lens

VR Stand for Video

Optional VR Stand Baseplate

Rev: 1.027.1217 E.&.O.E.