

Entaniya Fisheye

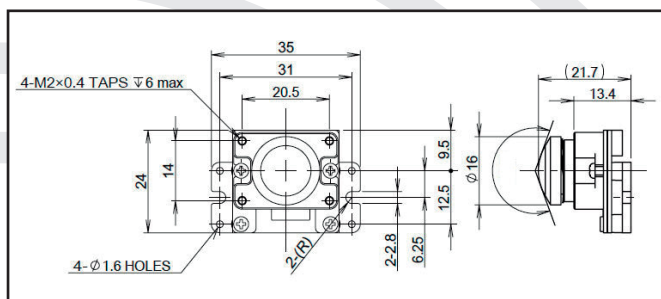


The Entaniya Raspberry Pi modification kit allows you to fit interchangeable lenses on to a Raspberry Pi Version 2 8 megapixel camera.

It is available from SeeSense as a **complete modified camera** or plain **modification kit**. SeeSense also offer a **modification service**.

A range of four wide angle lenses are available from Entaniya and other lenses from SeeSense. Contact us for details.

Ideal for general video, 360VR video, night filming (NoIR) or photosynthesis monitoring with the blue filter (included in NoIR version)



Please contact SeeSense for further details of this camera modification and suitable lenses we offer:

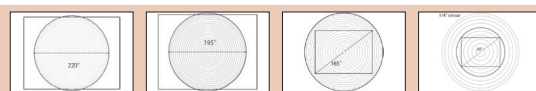
www.seesense.eu nigel@seesense.eu

Features:

- Fit a 220 degree lens on to Raspberry Pi camera
- 8MP Camera Resolution
- 4 x lens options with / without IR cut filter
- Camera available in no IR option
- Integrates with all Raspberry Pi Models
- Aluminium mount acts as a sensor heatsink
- Japanese lens technology & quality
- Camera weight - just 14g

Lens Specifications:

| Lens | RP-L220 | RP-L195 | RP-L165 | RP-L98 |
|---------------------|------------------------------------|---------------------|---------------------|------------------------------------|
| Focal Length | 0.79mm | 0.92mm | 1.82mm | 2.91mm |
| Image Format | 1/4" Sensor | | | |
| Adjustment | Manual focus, fixed iris | | | |
| Aperture (Fixed) | F2.1 | F2.47 | F2.83 | F2.72 |
| Field of View (HxV) | 220° (220°x220°) | 195° (195°x170°) | 165° (165°x125°) | 98° (98°x85°) |
| Lens Elements | 6 Elements (2 Glass, 4 Plastic) | 8 Glass Elements | 6 Glass Elements | 4 Elements (3 Glass, 1 Plastic) |
| Image Circle | 2.80mm Ø | 2.96mm Ø | 4.90mm Ø | 4.52mm Ø |
| Resolution | Suitable for Raspberry Pi Camera | | | |
| Back Focal Length | 1.46mm | 1.37mm | 2.67mm | 2.14mm |
| Mount | M12 (S-mount) (thread M12 x P0.5) | | | |
| Dimensions | 16mm Ø x 13.5mm | 15mm Ø x 12.93mm | 14mm Ø x 13.47mm | 14mm Ø x 12.42mm |



Compatibility Raspberry Pi Camera Version 2

All lenses available WITH or WITHOUT IR* (NoIR) cut filter * blue filter included

Camera Specification:

| | |
|--------------------|--|
| Connection | 15cm Ribbon cable |
| Compatibility | Raspberry Pi Model 1, 2 or 3 |
| Image Sensor | 1/4-inch CMOS (Sony Exmor R IMX219PQ) |
| Sensor Size | 5.095mm x 4.930mm |
| Active Pixels | Horizontal: 3280, Vertical: 2464 (8.08 MP) |
| HD Output Pixels | Horizontal: 1920, Vertical: 1080 Full HD |
| Pixel Size | 1.12µm x 1.12µm |
| Dimensions (LxWxH) | 35 x 24 x 21.7mm high (with 220° lens) |
| Weight | Approx. 14 grammes |

Rev: 1.002.0118 E.&O.E.