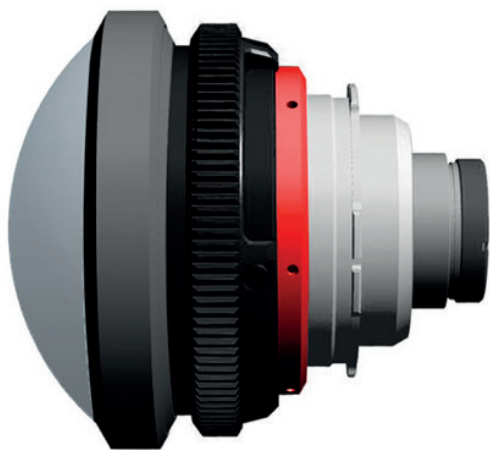


## Entaniya Fisheye



The Entaniya HAL220 is a **revolutionary NEW 220°** high resolution fisheye VR lenses enables the capture of unique wide-angle images well beyond a normal field of view. Despite the 220° angle of view the lens quality reveals few aberrations or fringing making it one of the best quality fisheye lenses in the world.

The lens is available with a PL-mount and includes an adjustable iris as well as a series of spacer rings to change the lens focal length from 8.03mm to 6.14mm making it the perfect fisheye lens for Full Frame, 35mm and Super 35mm camera formats.

The spacer rings allow precise image circles to be projected on to and suit a range of camera sensors. The HAL 220 can be fitted on to a selection of large format cameras including ALEXA LF, SXT W, and mini PLUS ARRI, RED, Blackmagic, Super 35 and FUJIFILM GFX 50S to name just a few.

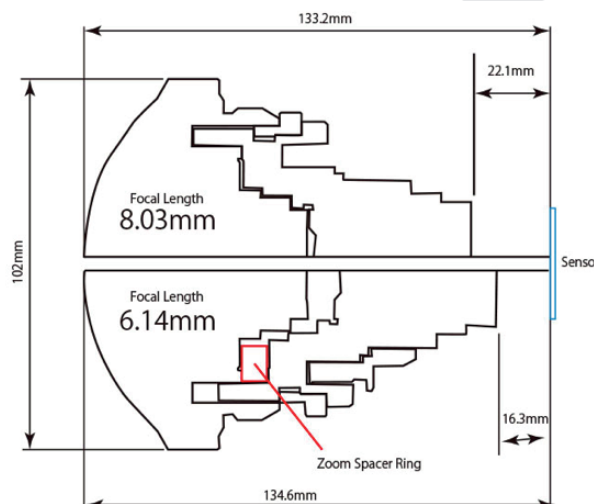
Use HAL 220 lenses for:

- 360VR video & stills photography
- 360° x 250° One-shot VR
- 180° imaging

**N.B. THESE SPECIFICATIONS ARE SUBJECT TO CHANGE**

### Features:

- 220° angle of View
- Focal length options 6.1-8.0mm  
Using Internal Lens Spacer System
- 4K Resolution
- Shoots Full Frame, 35mm and Super 35mm  
Covers Super 35mm at 8.03mm)
- Selection of camera mounts available
- Adjustable Iris T2.9-16 ('T' is the f-stop of the lens corrected for its absorbance and reflectance)
- PL-mount
- Used for video or still photography
- Ideal for two camera 360VR filming
- Suitable for one-shot 220° VR imaging
- Japanese lens technology & quality
- Weight : TBC
- Supplied with lens tripod mount



Please contact SeeSense for further details of the comprehensive range of lenses we offer:  
[www.seesense.eu](http://www.seesense.eu) [sales@seesense.eu](mailto:sales@seesense.eu)

Rev: 1.022.0519 E.&O.E.

## Specification:

|   |   |
|---|---|
| Focal Length  | 6.14 - 8.03mm (Fixed focal lengths)   |
| Spacer Rings  | 6.14, 6.20, 6.30, 6.40, 6.51, 6.63, 6.74, 6.87, 6.99, 7.12, 7.26, 7.40, 7.55, 7.70 and (no spacer ring) 8.03mm    |
| Field of View                                       | 220°  |
| Image Circle  | @180°:19.0mm-25.0mm<br>@220°:22.6mm-29.8mm  |
| Aperture  | T9-T16 (operated by iris ring)  |
| Iris blades   | 9   |
| Adjustment  | Manual focus and iris   |
| Operating Temperature                               | To be confirmed   |
| Lens Elements                                       | To be confirmed   |
| Resolution  | Suitable for 4K   |
| Flange Back<br>(Distance from rear optic to sensor) | FL 8.03mm = 22.1mm<br>FL 6.14mm = 16.3mm  |
| Lens Mount  | PL-mount  |
| Weight (g)  | To be confirmed   |
| Dimensions  | 102mm (Dia)<br>Lens front - sensor distance (L)<br>8.03mm Focal Length = 133.2mm<br>6.14mm Focal Length = 134.6mm |
| Operating Temperature                               | To be confirmed   |

## Camera Compatibility:

|                        |                                     |
|------------------------|-------------------------------------|
| 36.70 x 25.54mm Sensor | ALEXA LF, ALEXA mini LF             |
| 28.25 x 18.17mm Sensor | ALEXA SXT W, ALEXA mini, ARRI AMIRA |
| 40.96 x 21.60mm Sensor | RED MONSTRO                         |
| 29.90 x 15.77mm Sensor | RED HELIUM                          |
| 30.72 x 18.00mm Sensor | RED GEMINI                          |
| 25.60 x 13.50mm Sensor | RED DRAGON-X                        |
| 36.00 x 24.10mm Sensor | SONY VENICE                         |
| 25.34 x 14.25mm Sensor | BLACKMAGIC URSA, Mini Pro 4.6K G2   |
| 24.00 x 14.00mm Sensor | SUPER 35                            |
| 43.80 x 32.90mm Sensor | FUJIFILM GFX 50S                    |

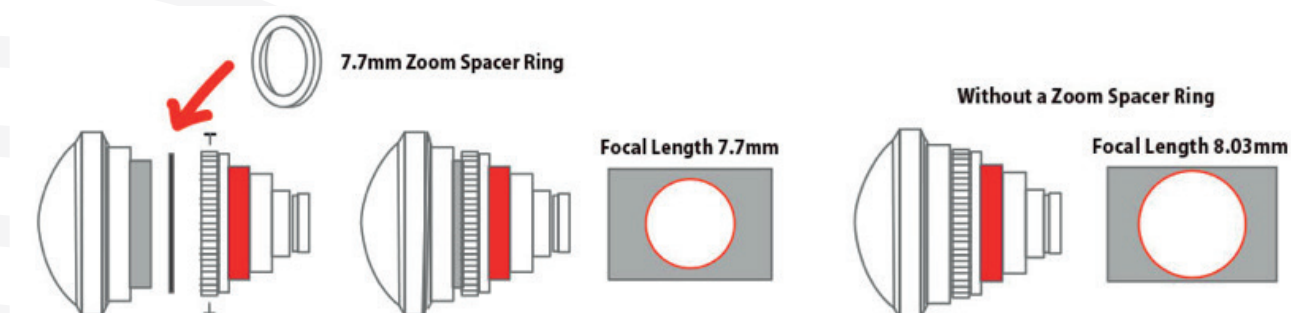
### NOTE:

This lens is not compatible with all cameras. Take care to check that the rear of the lens does not impact on the sensor window (especially when the focal length is below 7mm. (Using 6.14 ~ 6.99mm spacer rings)

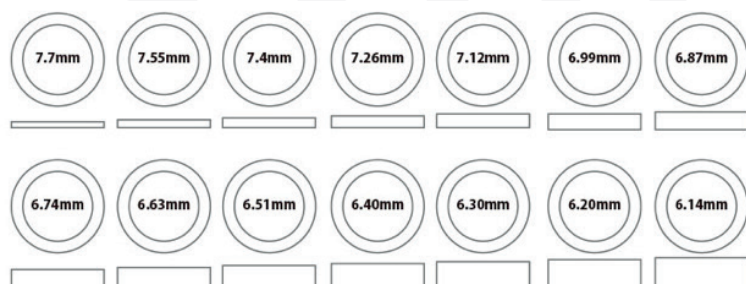
### Accessory Range:

TO BE ADVISED

## CHANGING THE LENS FOCAL LENGTH



## HAL 220 SPACER RINGS



Please contact SeeSense for further details of the Entaniya lens range:

[www.seesense.eu](http://www.seesense.eu)  
[sales@seesense.eu](mailto:sales@seesense.eu)

Rev: 1.022.0519 E.&O.E.