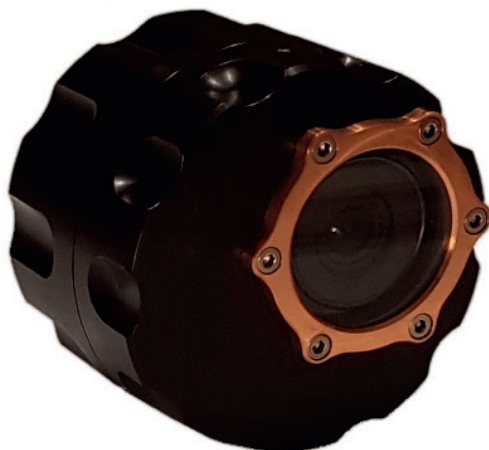


CamDo
Connect more Do more



The CamDo Deep is a professional grade underwater housing which enables use of GoPro Hero3+ and Hero 4 cameras in deep water and other extreme environments.

The Deep housing is designed and tested to withstand water pressure at a depth of 600 metres (2,000ft). It is machined from 6061 grade Aluminium alloy and anodized for resistance to saltwater and harsh environments. The Deep housing is large enough to take the camera and an accessory such as the GoPro Battery BacPac or CamDo BLINK time lapse controller.

The optional Deep EXT extends the housing by a further 140mm and can accommodate up to three CamDo V15 (15 Watt hour) batteries. Each V15 battery provides around 3X the life of a conventional GoPro battery.

Please contact SeeSense for further details of this and all the GoPro compatible enhancements that we can offer:

www.seesense.eu sales@seesense.eu

Features:

- Tested to 600m (2000')
- Suitable for **GoPro Hero4 and 3+ cameras**
- Quick and simple to use (no tools required)
- Optional Deep-EXT housing extension
- Anodised aluminium alloy housing
- Resistant to saltwater and harsh environments

Applications:

- Underwater filming
- Underwater inspection
- Underwater timelapse
- Harsh environment use

Specifications:

Operational Depth	Tested to 600m (2,000')
Material	Anodised 6061 Aluminium alloy
Compatible Cameras	GoPro H4B, H4S, H3+B & H3+S
Dimensions	Ø 108mm x 103mm (242mm with Deep Ext)
Interior footprint	TBC
Mounting	1/4"-20 UNC mount on rear, top and bottom
Weight	TBC



DEEP WITH DEEP EXT

DEEP

DEEP EXT



Rev: 1.028.0916 E.&O.E.